



[insert date] 2021

Dear Property Owner on Mount George Road

Installation of Traffic Calming Devices to Mount George Road

George Town Council recently undertook an independent Traffic Impact Assessment on Mount George Road to assess the impact of a new access to a carparking area at the old quarry site as part of the Mount George Mountain Bike Trail Network. The report was assessing the safety implication from the anticipated increase in traffic numbers, and suggested mitigation for identified safety concerns.

It is Council's intention to accept recommendations offered in the Traffic Impact Assessment, by installing two traffic calming devices (watt profile – road humps) on Mount George Road to the east and uphill of the access to the new carparking area. A concept design has been included on the following page to illustrate the location of the works.

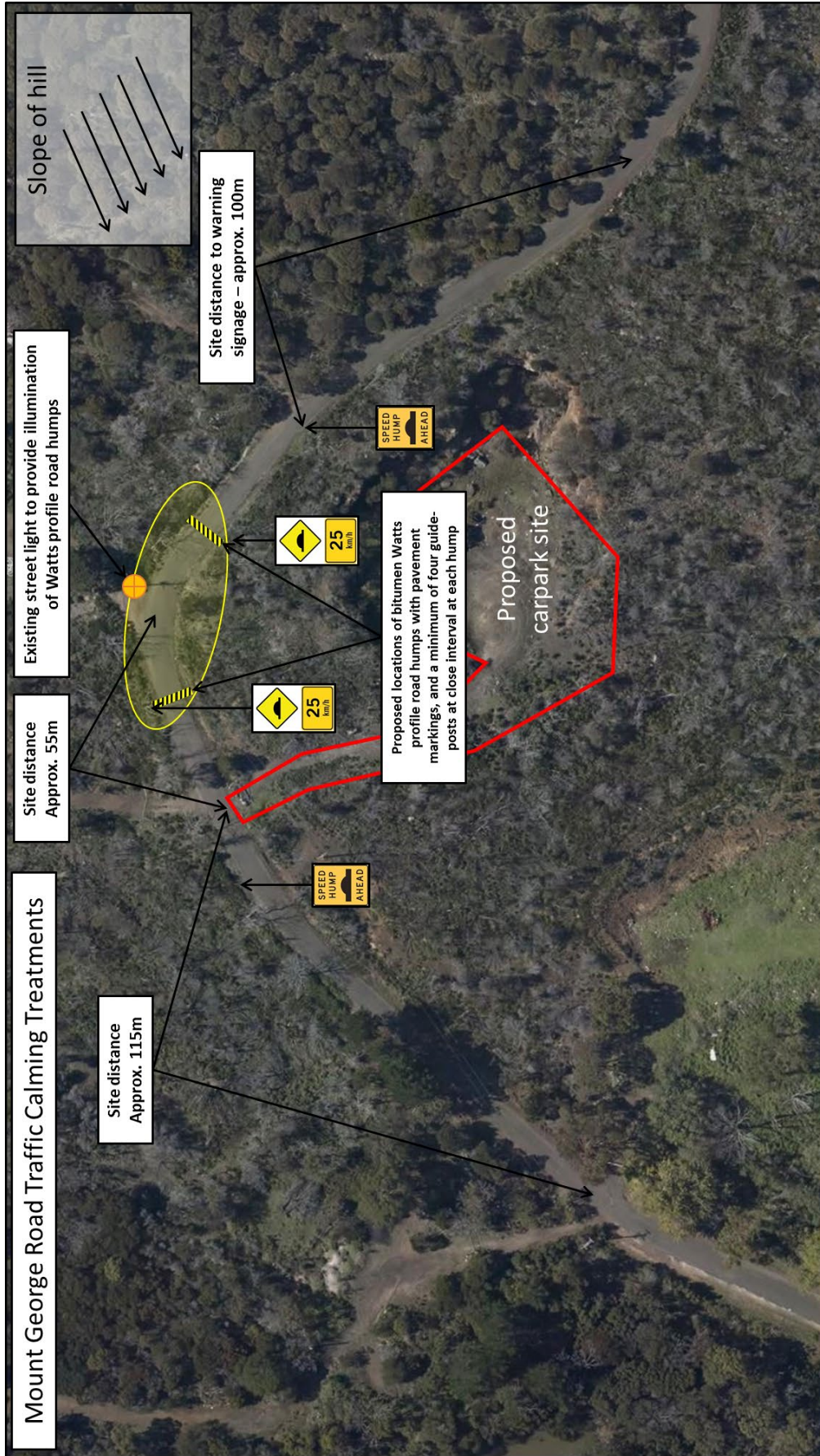
At this stage, Council intends to commence this work within the first two weeks of May, with completion by 14th May 2021. When the exact time and date are known, an additional notification will be sent you.

If you have any questions, please contact myself on 6382 8800 or council@georgetown.tas.gov.au.

Thank you for your patience during this important work.

Kind Regards,

Peter Rickards
Project Manager
George Town Council



Picture: Proposed installation of road humps on Mount George Road.