



# Kerbside Waste Collection Schedule

South George Town Service Area (South of Main Road)

## WASTE COLLECTION SERVICE

Waste pickup is provided weekly in all areas, with recycling being provided fortnightly. Please refer to the map and calendar for collection dates in your area.

All waste / recycling bins are required to be out **no later** than 6.00am on the day of collection.

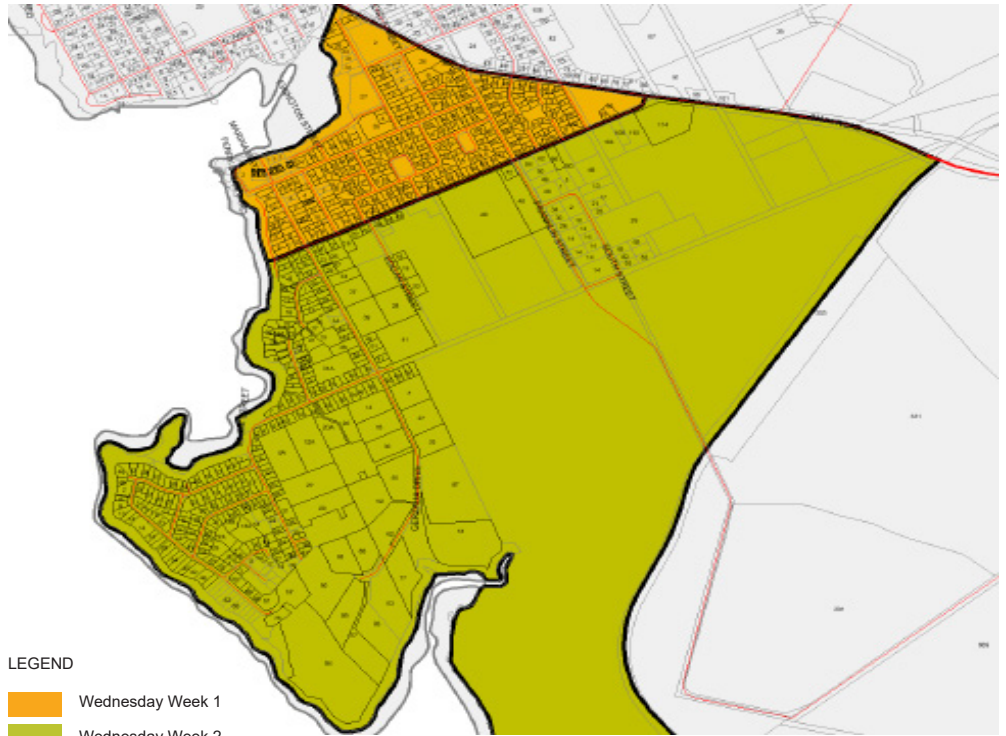
## WASTE COLLECTION

### WEDNESDAY

### RECYCLING

**Week 1** : GeorgeTown internal area bounded by Main Road & Victoria Street.

**Week 2** : George Town area on Southern side of Victoria Street



JANUARY - JUNE 2023

Jan-23							Feb-23							Mar-23						
S	M	T	W	T	F	S	S	M	T	W	T	F	S	S	M	T	W	T	F	S
1	2	3	4	5	6	7				1	2	3	4				1	2	3	4
8	9	10	11	12	13	14	5	6	7	8	9	10	11	5	6	7	8	9	10	11
15	16	17	18	19	20	21	12	13	14	15	16	17	18	12	13	14	15	16	17	18
22	23	24	25	26	27	28	19	20	21	22	23	24	25	19	20	21	22	23	24	25
29	30	31					26	27	28					26	27	28	29	30	31	

Apr-23							May-23							Jun-23						
S	M	T	W	T	F	S	S	M	T	W	T	F	S	S	M	T	W	T	F	S
						1		1	2	3	4	5	6					1	2	3
2	3	4	5	6	7	8	7	8	9	10	11	12	13	4	5	6	7	8	9	10
9	10	11	12	13	14	15	14	15	16	17	18	19	20	11	12	13	14	15	16	17
16	17	18	19	20	21	22	21	22	23	24	25	26	27	18	19	20	21	22	23	24
23	24	25	26	27	28	29	28	29	30	31				25	26	27	28	29	30	
30																				

Please note that recycling is split over two weeks.

We highly recommend that residents download the free **Recycle Coach App** to their mobile device. This App will provide schedules and reminders specific to your location.

For additional mapping and information, please visit Council's website <https://georgetown.tas.gov.au>

ENQUIRIES | George Town Council 16-18 Anne Street George Town TASMANIA 7253 | (03) 6382 8800  
 council@georgetown.tas.gov.au | <http://georgetown.tas.gov.au>

### FREE Hard & Green Waste Days

#### George Town

- Saturday 11th & Sunday 12th March 2023 9am - 4pm

#### Pipers River

- Sunday 12th March 2023 9am - 4pm

## Kerbside Recycling Dos & Don'ts

### What CAN go into your kerbside recycling bin?

- ✓ **Glass**
- ✓ Bottles
- ✓ Jars
- ✓ **Paper and Cardboard**
- ✓ Office paper (not shredded)
- ✓ Newspaper
- ✓ Cardboard (not waxed)
- ✓ Magazines and pamphlets
- ✓ Paper bags
- ✓ Letters and envelopes
- ✓ Telephone books
- ✓ Liquid paperboard such as clean milk cream and custard cartons (Southern TAS only)
- ✓ **Metal**
- ✓ Aluminium cans
- ✓ Steel cans
- ✓ Tin plated steel cans
- ✓ Aluminium foil (clean)
- ✓ Paint tins
- ✓ Aerosol cans
- ✓ **Hard Plastics**
- ✓ Any plastic that is rigid or holds its shape, for example shampoo bottles or 'clam shell' style packaging.

If you are unsure of what you can recycle through your kerbside recycling bin, please contact your local council for more information.



### Did you know?

The energy saved by recycling a single glass bottle could light a 15-watt low energy light bulb for 25.6 hours.



## What CANNOT go into your kerbside recycling bin?

The following items should never be placed into your recycling bin. These items ruin your 'good' recyclables, trucks and recycling equipment and cause harm to the people who sort your recycling.

- ✗ Animal faeces
- ✗ Animal remains
- ✗ Batteries
- ✗ Broken crockery or glass
- ✗ Bubble wrap
- ✗ Cereal bags
- ✗ Clothing and shoes
- ✗ Coat hangers and wires
- ✗ Electronic equipment
- ✗ Food waste
- ✗ Garden and lawn clippings
- ✗ Gas cylinders
- ✗ Hoses
- ✗ Liquid paperboard such as milk, cream and juice cartons (North & North West TAS only)
- ✗ Meat trays
- ✗ Medical waste or syringes
- ✗ Metal sawcepsans
- ✗ Nappies
- ✗ Paint
- ✗ Paper towel
- ✗ Plastic bags
- ✗ Plastic film
- ✗ Plastic toys
- ✗ Polystyrene
- ✗ Scrap metals
- ✗ Soft plastics – plastic that is flexible, for example, bread bags, bubble wrap and plastic bags cannot be recycled in any Tasmanian kerbside recycling collection. Most major supermarkets now accept clean, flexible plastics for recycling.
- ✗ Tetra cartons



### Did you know?

- Australians are among the highest producers of waste per person in the world, yet we still only recycle 51% of our municipal solid waste.
- Australians produce 650kg of waste per person per year.

Even though these materials cannot be placed in your recycling bin, it does not necessarily mean that they are not recyclable, it is just that the local kerbside service does not have the infrastructure to deal with these items.

Please don't place your recycling inside bags or boxes or tie up with string. Please visit [rethinkwaste.com.au](http://rethinkwaste.com.au) to find local places where you may be able to take these materials for recycling.