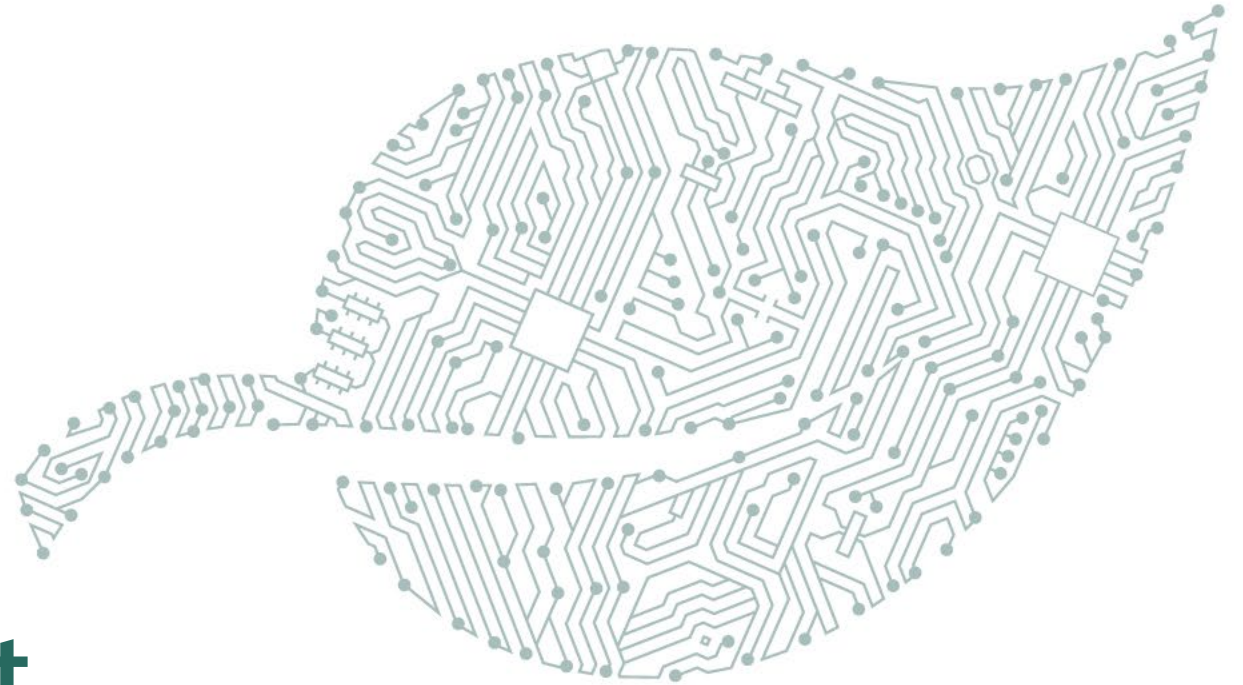




Your FY24 Environmental Impact

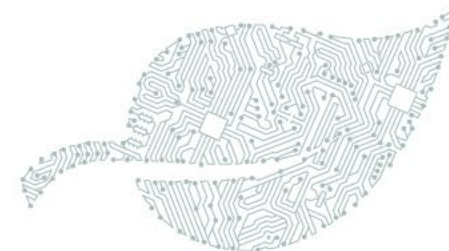
George Town Council - Transfer Station

111 Mount George Road, George Town, TAS 7253





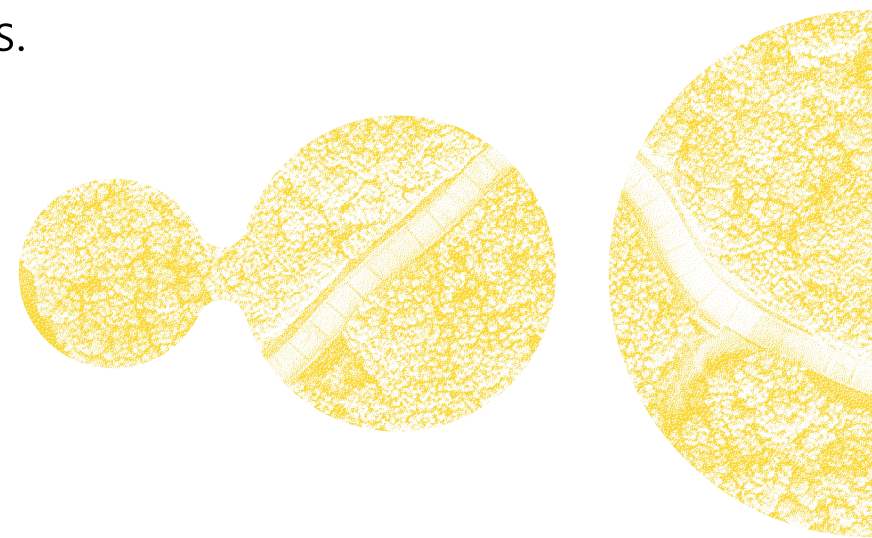
A tailored lifecycle assessment



ANZRP is committed to working with its collection partners to safely collect and recycle e-waste, producing environmentally sustainable and socially beneficial outcomes.

Every year, ANZRP engages a consultancy – Lifecycles – to undertake an independent lifecycle assessment on the impact our service has made on the environment over the financial year.

Lifecycles' most recent lifecycle assessment was undertaken in October 2024 based on the volume of in-scope NTCRS e-waste recycled by TechCollect in 2023/24. This has highlighted a number of environmental benefits.





Last financial year, TechCollect recycled **4,804 kilograms of NTCRS “in-scope” e-waste** collected at George Town Council - Transfer Station

From a sustainability perspective, this translates to:



9,950 kg

of CO₂e emissions prevented from entering the atmosphere. This is equivalent to planting 164 trees¹.



123,252 megajoules

of energy saved. This is equivalent to the 500 days of average household energy use³.



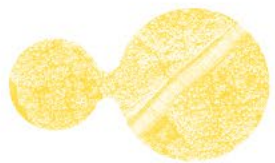
2,168 m³

of water saved. This is equivalent to 63 days of average household water use².



13,923 grams

of particulate matter prevented from entering the atmosphere. This is equivalent to driving a truck 20,651 km on Australian roads⁴.



Thank You

For supporting ANZRP and helping achieve
a positive impact on the environment





References

1. Based on modelling assumptions developed by the U.S. EPA in their Greenhouse Gases Equivalencies Calculator:
<https://www.epa.gov/energy/greenhouse-gases-equivalencies-calculator-calculations-and-references>
2. Based on 34 cubic metres equivalent per day and per Australian household in FY22, using Australian Bureau of Statistic data ([Water Account](#)), and the Australian average water scarcity factor as per the AWARE method.
3. Based on 90 GJ of annual energy per Australian household in FY22, using Australian Bureau of Statistic data ([Energy Account](#)).
4. Factor applied based on an EURO3 diesel truck emissions as modelled in eco-invent 3.5.

*Note, e-waste collected and recycled through individual producer responsibility programs were not included in the life cycle assessment and in the impact figures provided above.