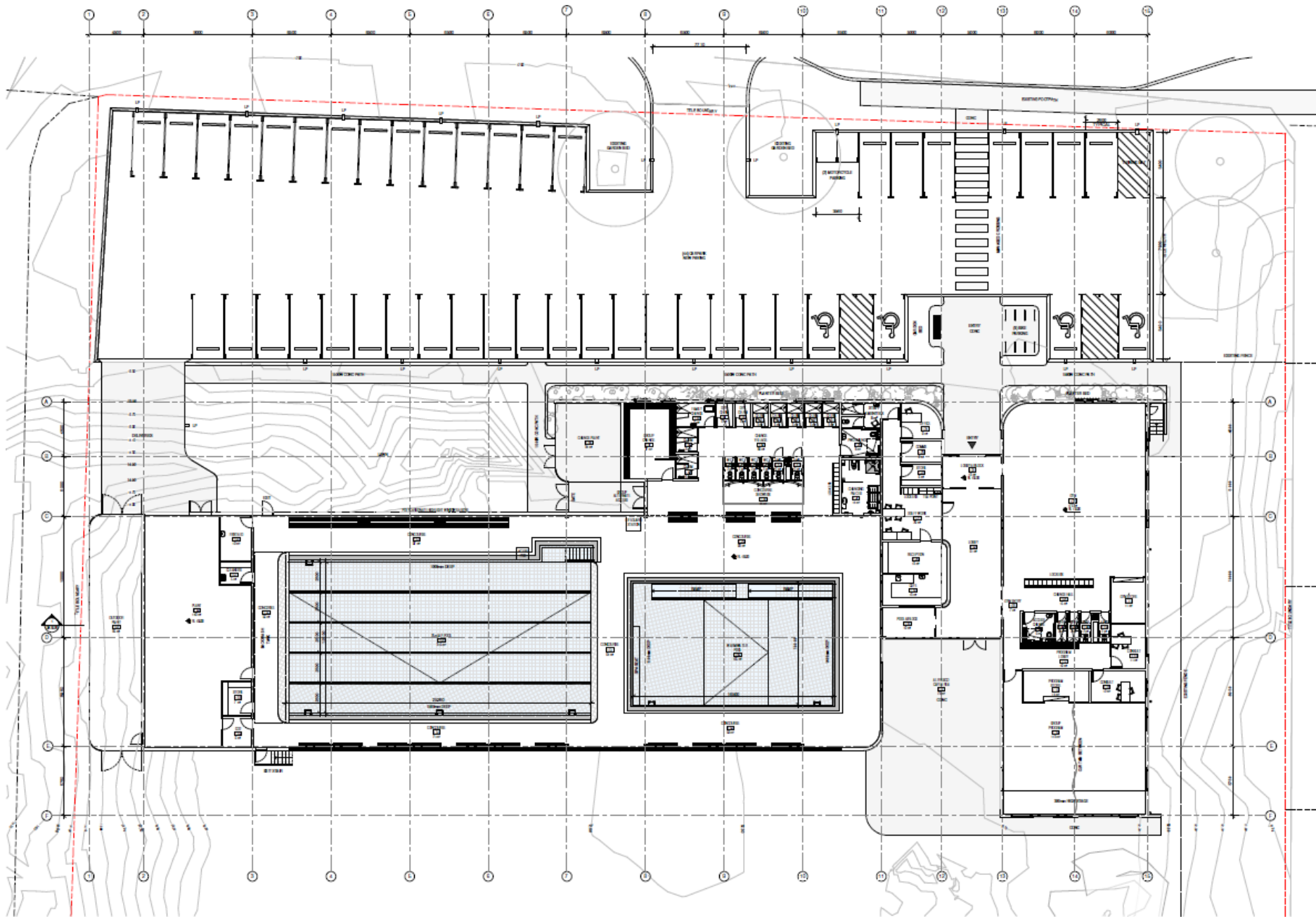
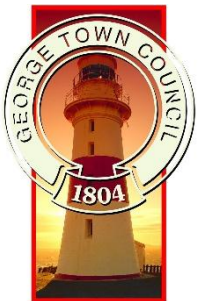




Design Layout of the New Centre

Architectural floor plan on next slide

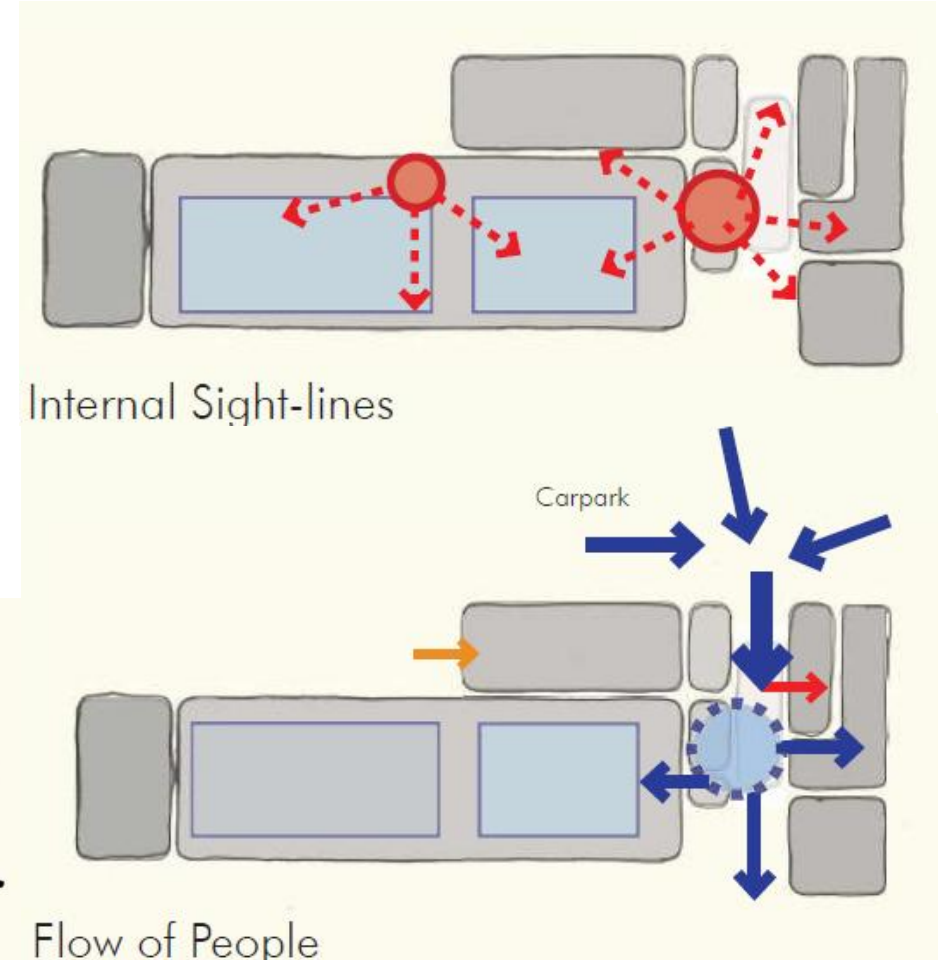
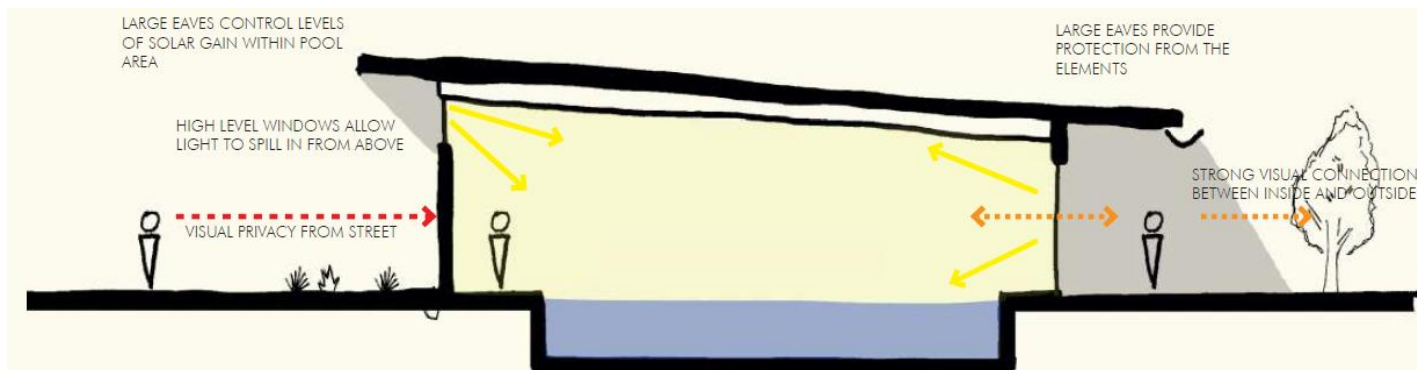






Design Layout of the New Centre

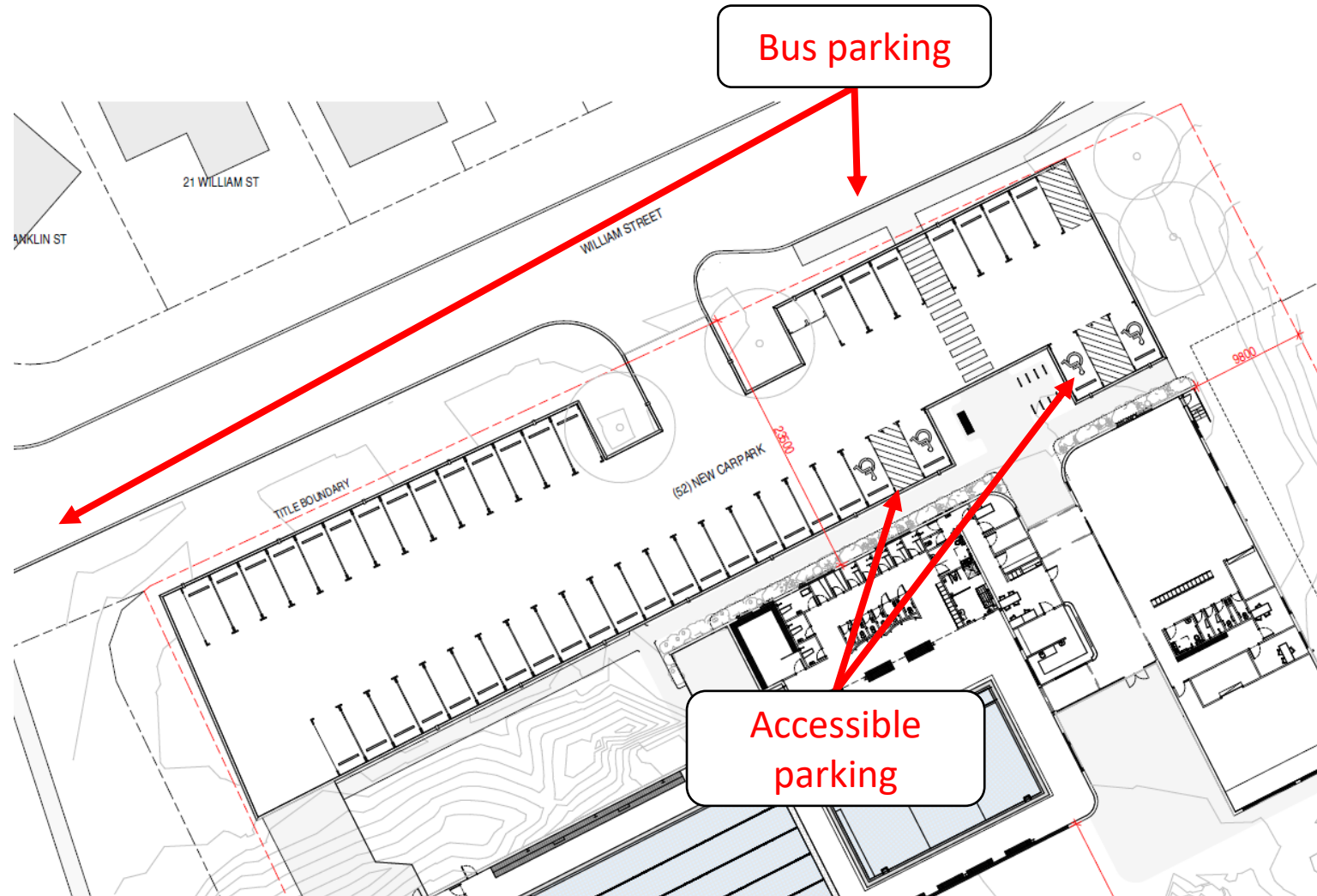
- Uses the existing development footprint of swimming pool complex
- Northern aspect to maximise on passive lighting and heating
- Designed for operational efficiencies, and user/people flow management





Design Layout of the New Centre

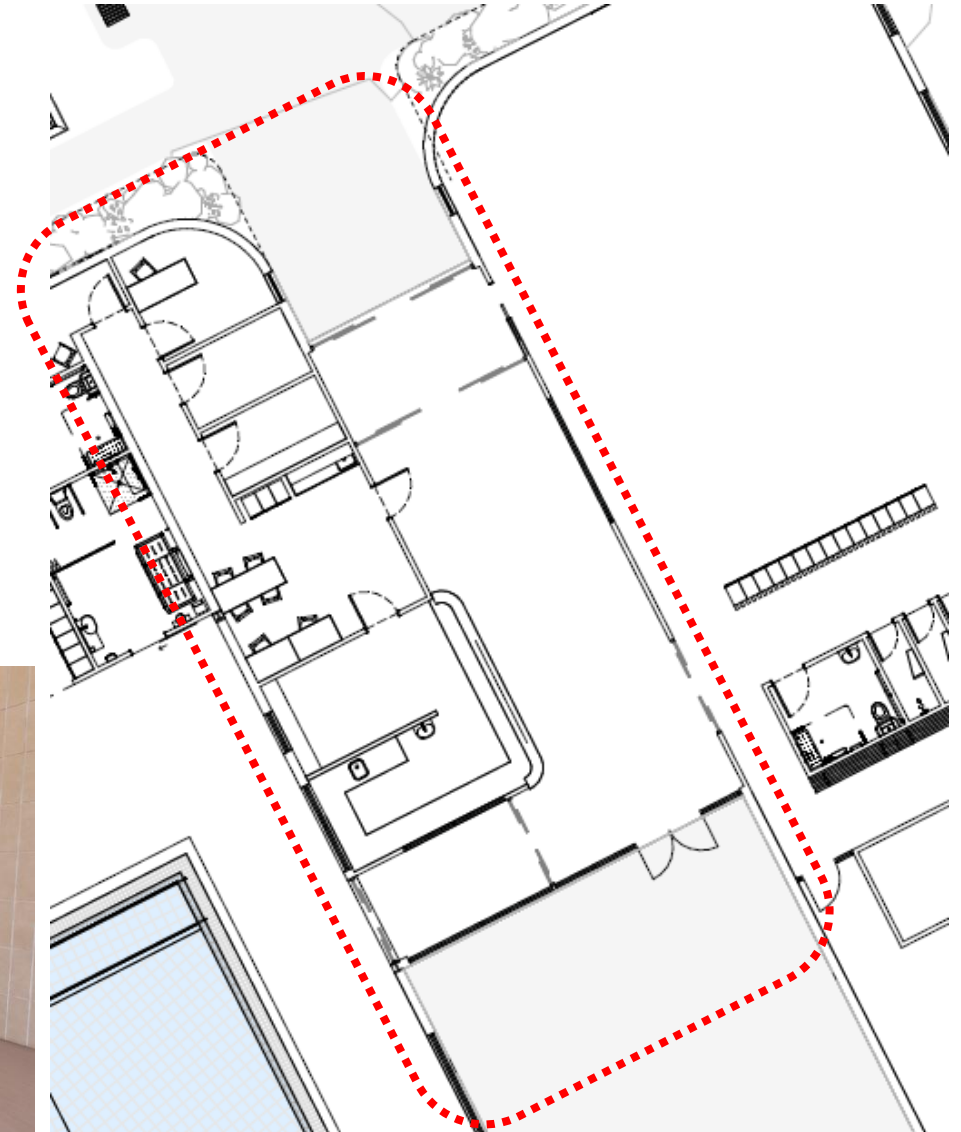
- Carpark remains largely unchanged
- Additional accessible carparks
- Bus parking on street





Foyer / Reception Area

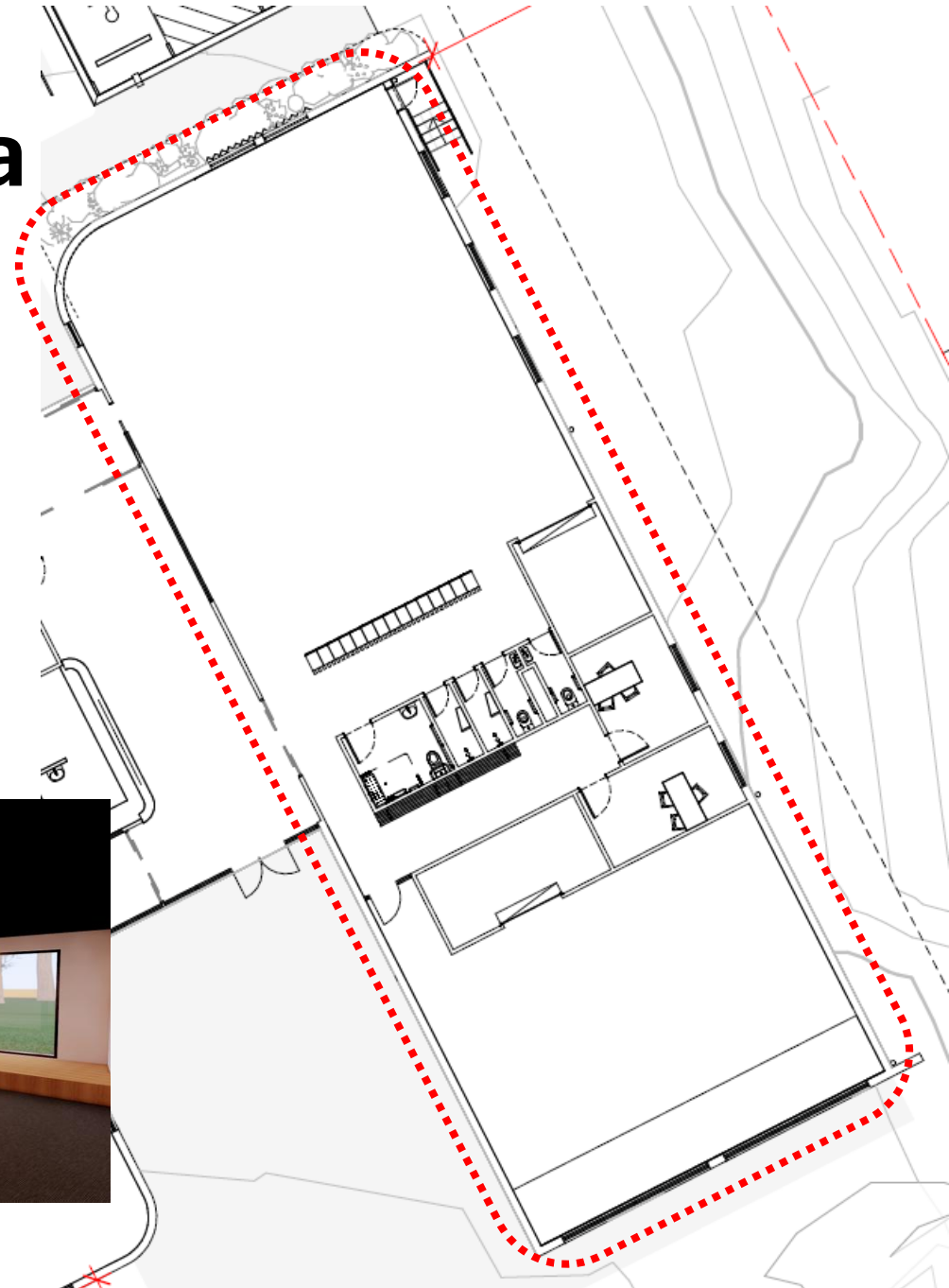
- Counter area to side, allowing free movement through the foyer
- Members can “skip” reception with separate fob-style entry to pool and health/fitness areas
- Reception staff have visibility through to pool for passive surveillance
- Reception counter also serves as a basic café/kiosk (no onsite food prep)
- Large doors opening to external forecourt and future outdoor aquatics





Health and Fitness Area

- Gym area for strength training, cardio equipment, functional training and stretching
- Two consultation suites for external health professionals (e.g. physiotherapy, aquatic therapy, rehabilitation services)
- A program room for health and fitness classes (e.g. yoga, Pilates, Zumba)
- Customer amenities – toilets and showers





Change Village

- 6 x concourse showers
- 6 x individual unisex water closets with basins
- 5 x unisex shower/changing rooms
- 2 x oversized unisex shower/changing rooms
- 2 x unisex dry changing rooms
- 1 x family changing room
- 1 x group changing room for school groups
- 1 x accessible changing room with shower and toilet
- 1 x Changing Places facility
(close to entrance and warm water pool ramp)

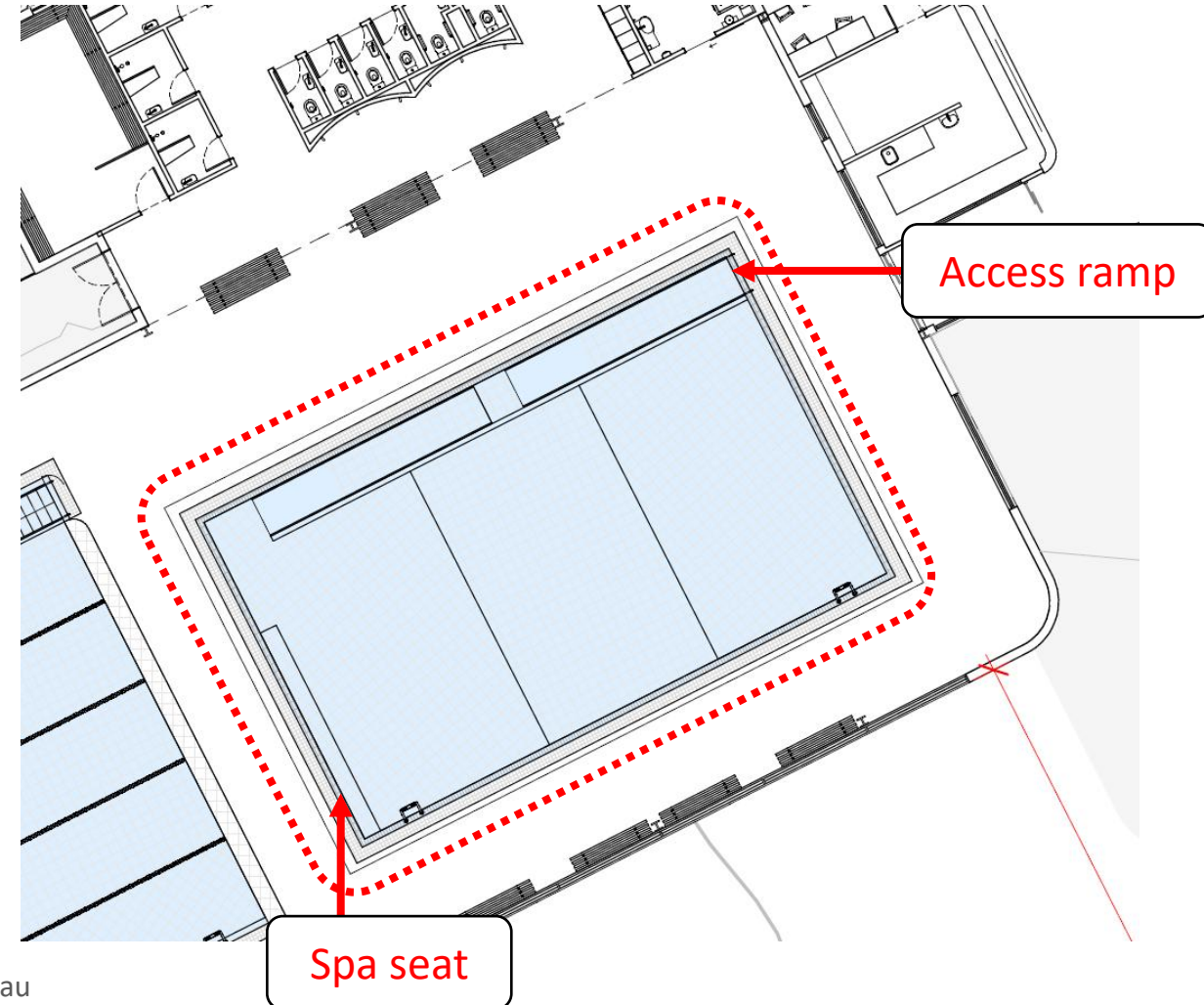




Pool Hall – Warm Water Program Pool

(10m x 16.5m)

- Suitable for rehabilitation activities, gentle exercises, classes, swim lessons (parent with children/infants/babies), or relaxing on the spa seat
- Accessibility ramp, with nearby access to the Changing Place facility
- Depths range from 1.0m to 1.4m.

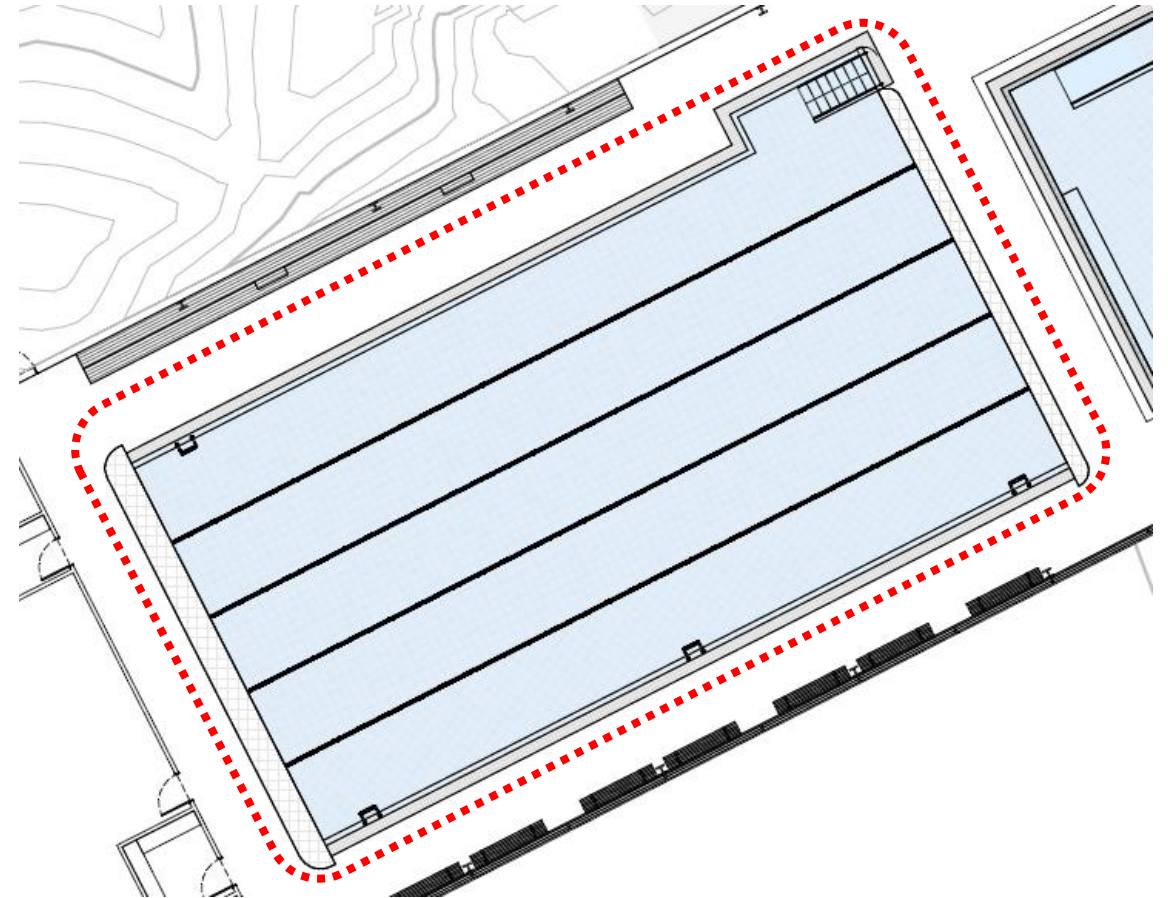
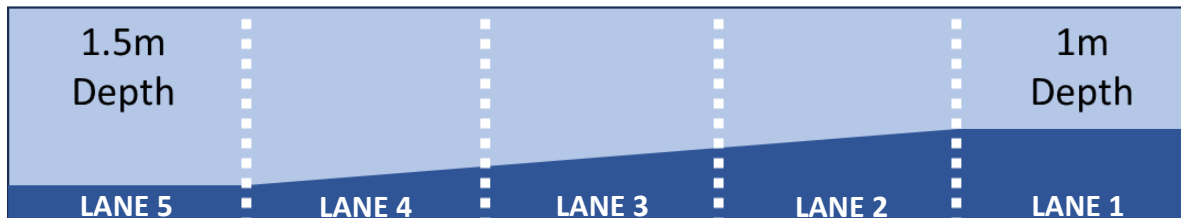




Pool Hall – 25m Pool

(25m x 12.5m with variable lane configuration)

- Suitable for general pool play, lap swimming, learn to swim programs, aqua aerobics, schools and school carnivals, swim programs, junior squads, swim club training, water walking, and gentle exercise
- Stair access, and access pod
- Separate group/school entrance directly to pool hall
- Multiple lane configurations depending on use requirements (more info on next slides)
- Width-ways depth ranging from 1.0m to 1.5m
- Diving block on deep lane to facilitate supervised diving lessons





Pool Hall – 25m Pool

Lane configuration options

- Entire pool for general pool play
- 3 x 2.5m lanes for lap swimming (beginner, intermediate, advanced lanes) and a 5m x 25m area for general pool play, water walking, aqua aerobics and gentle exercise
- 3 x 2.5m lanes for lap swimming and 2 x 2.5m lanes learn to swim programs
- 6 x 2m lanes for school swimming carnivals.

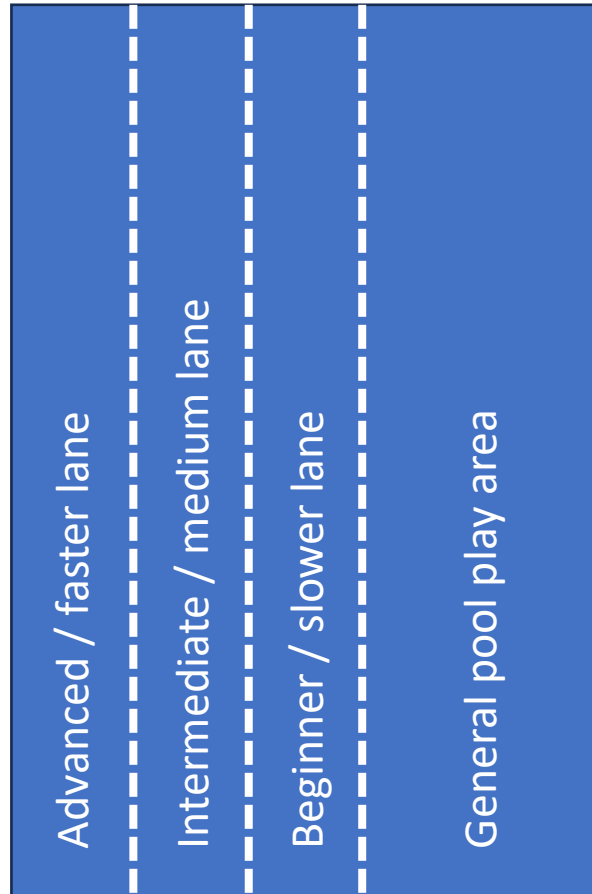




Pool Hall – 25m Pool

3 x 2.5m lanes for lap swimming and a 5m x 25m general pool play

Aerial view of pool

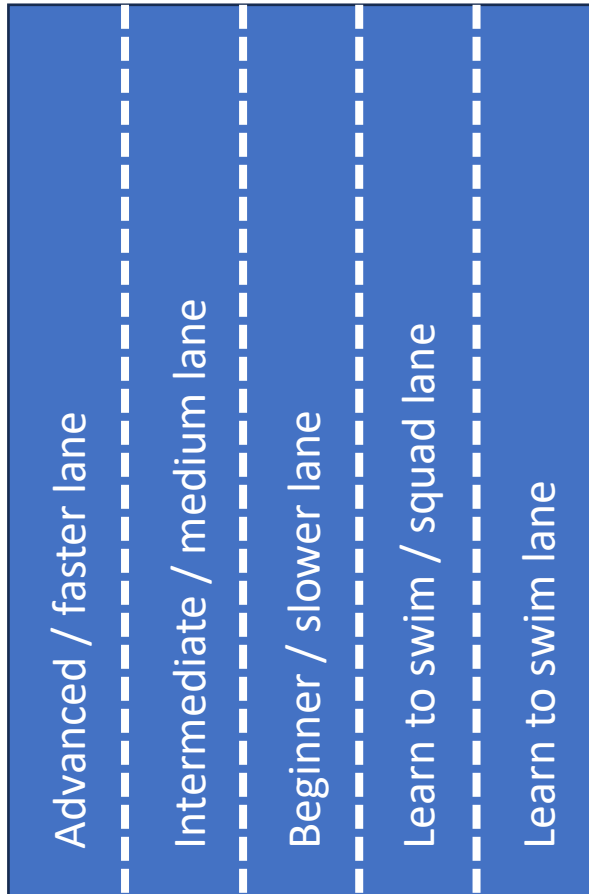




Pool Hall – 25m Pool

3 x 2.5m lanes for lap swimming and 2 x 2.5m lanes learn to swim

Aerial view of pool

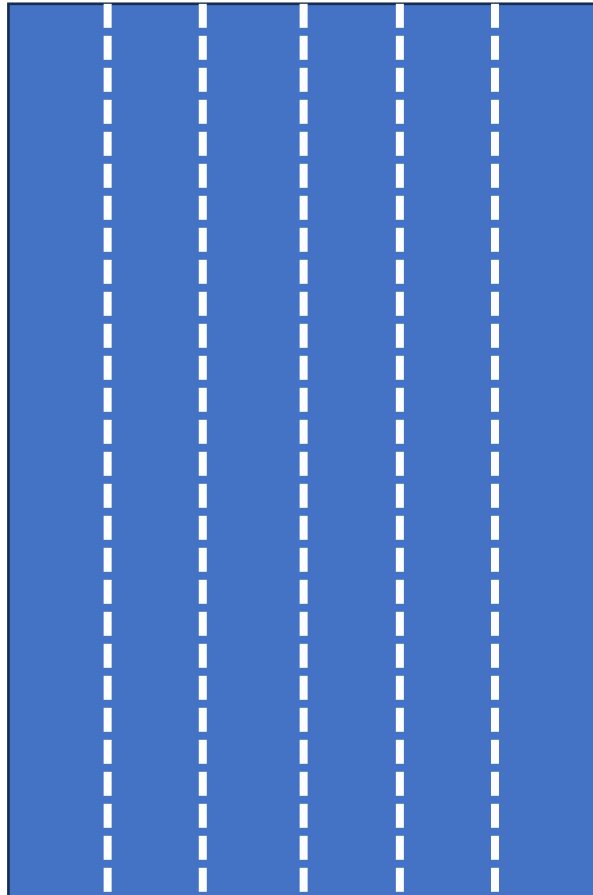




Pool Hall – 25m Pool

6 x 2m lanes for school swimming carnivals

Aerial view of pool





Operational Model

How much will it cost to use the facility?

The entry fees are still to be determined, but Council is aware of the financial constraints some residents of George Town may be under, and wants to ensure the new facility is available to everyone. The entry fees will be structured with varying price points depending on which services are accessed (e.g. pool hall access only; pool hall and gym access; etc)

Will the facility be run by Council or a third party?

Council has yet to determine the operational model and will consider which option is the most beneficial to the community. Regardless, the facility will be fully equipped at the time of opening.





Future Developments for Outdoor Area

- Currently the design considers outdoor amenity as complementing the indoor facilities through seating and landscaping
- The council is already advocating for an outdoor water-play area, and outdoor 25m pool

